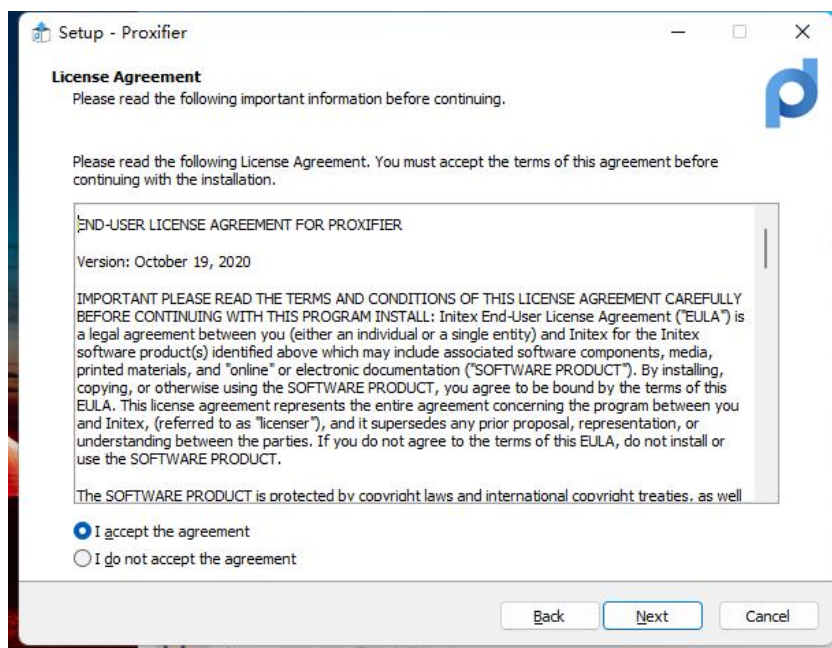
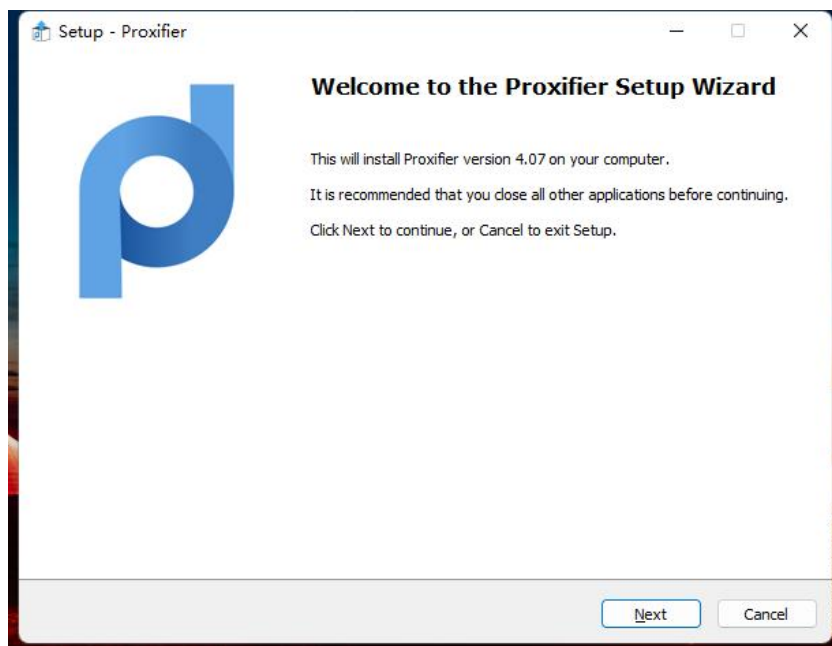
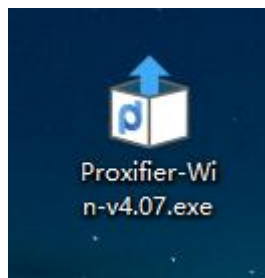
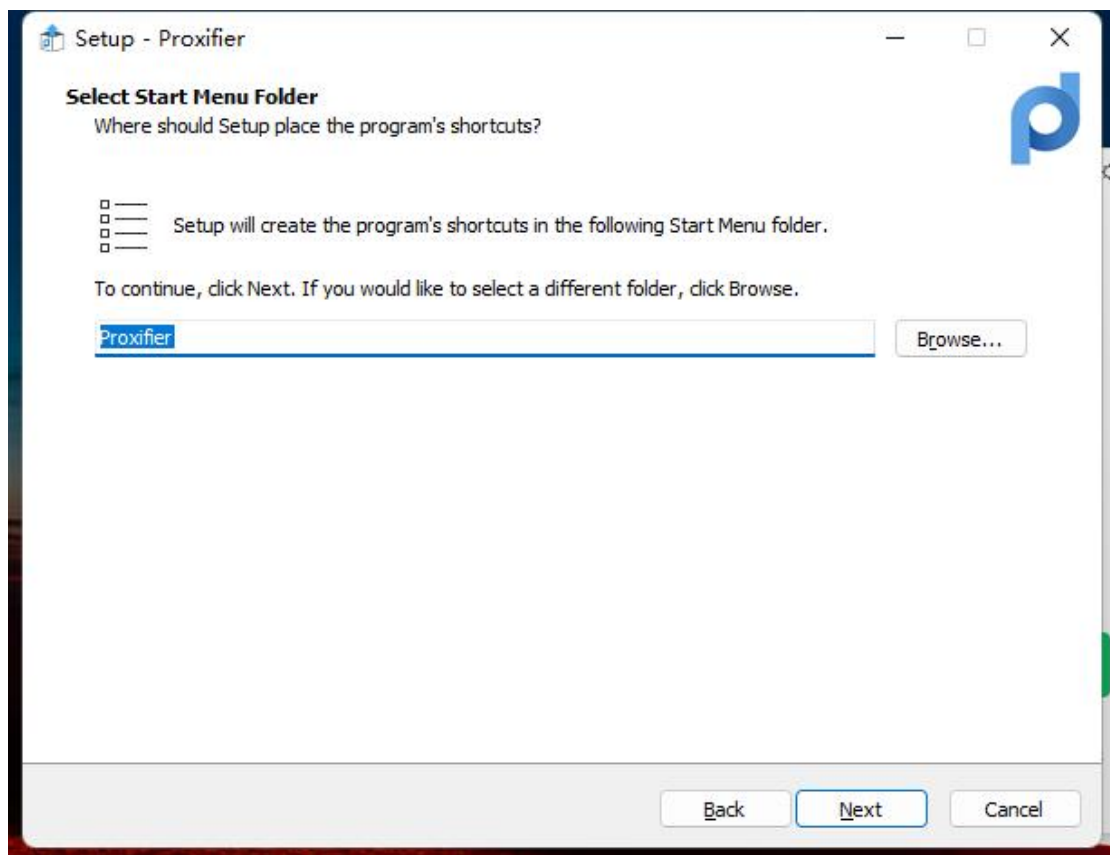
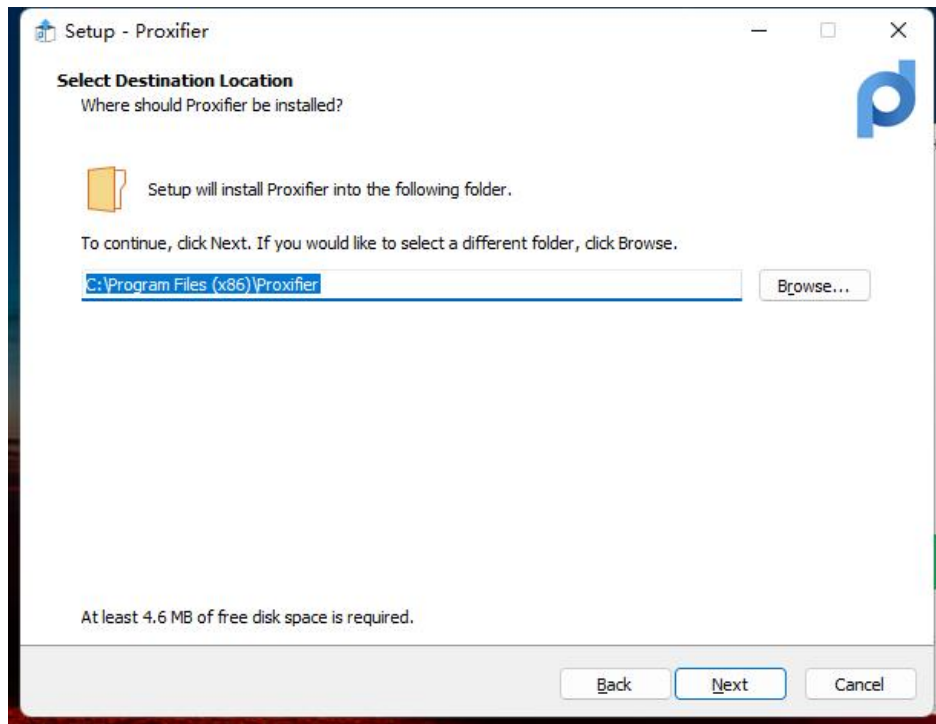


下载程序

[http://192.144.220.147:9000/ssh\\_proxy/Proxifier-Win-v4.07.exe](http://192.144.220.147:9000/ssh_proxy/Proxifier-Win-v4.07.exe)

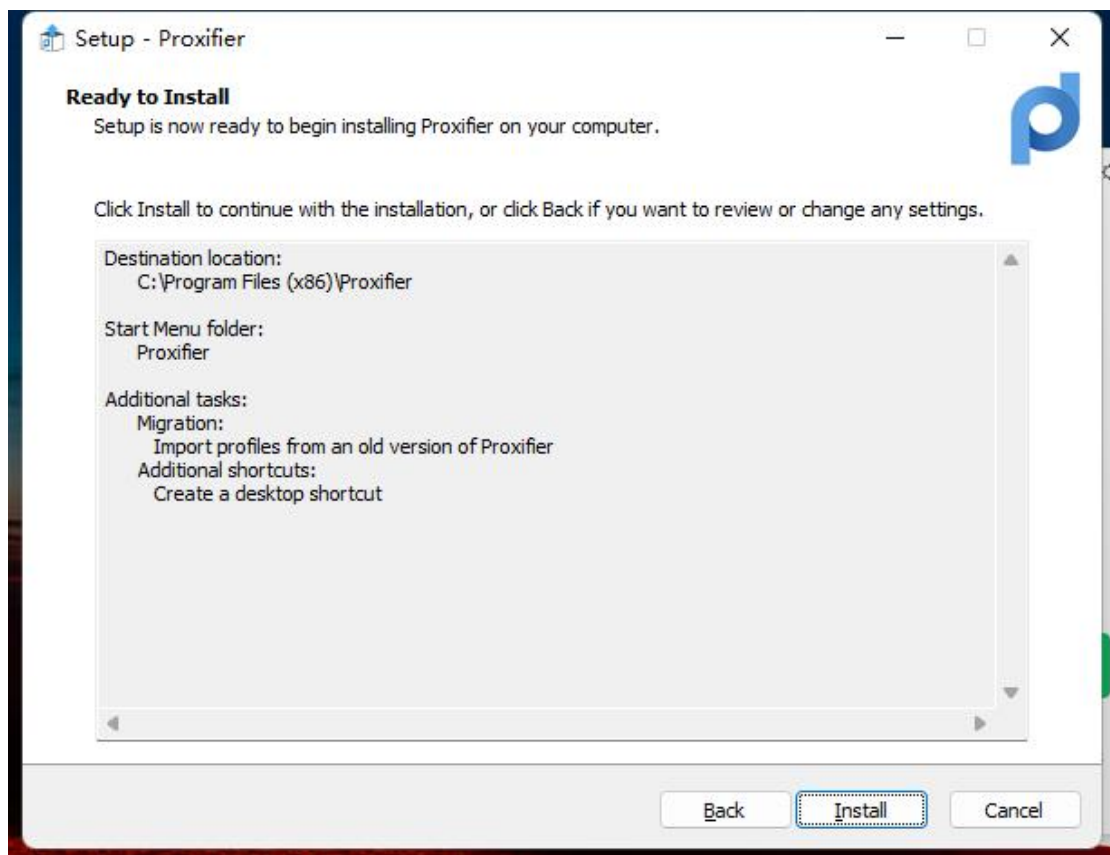
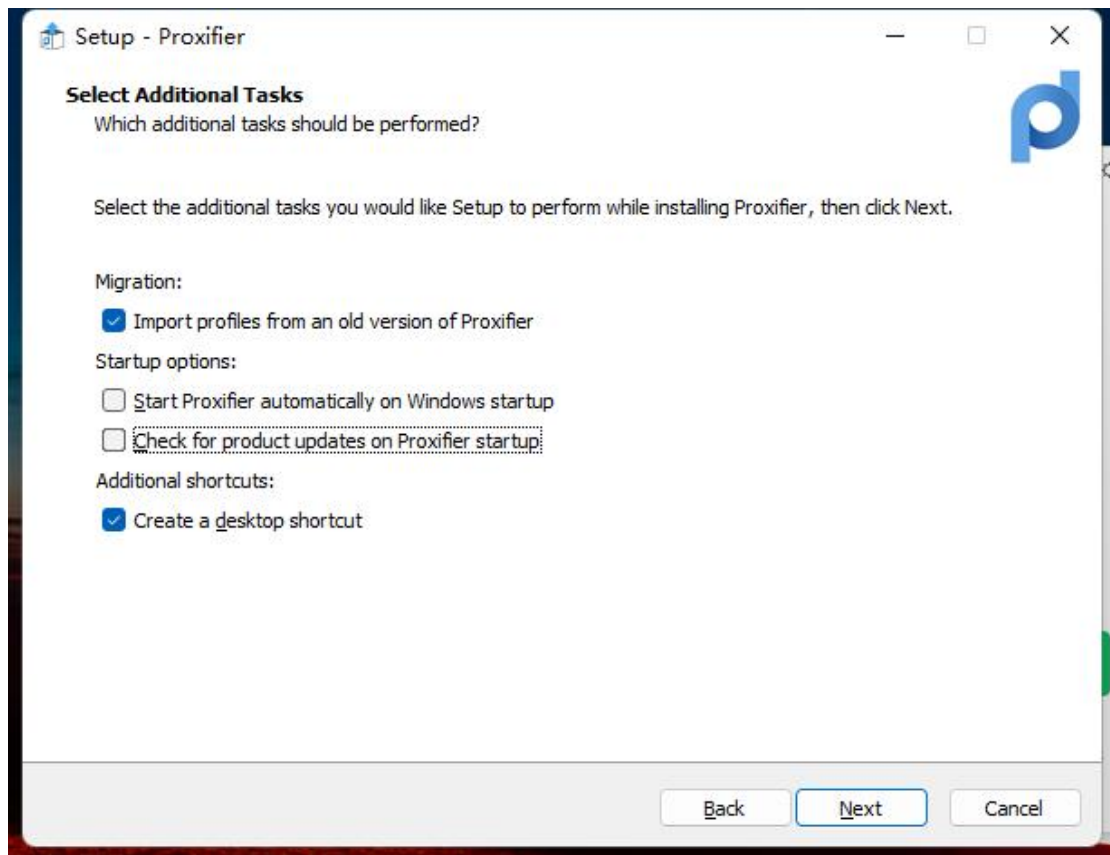
双击程序安装

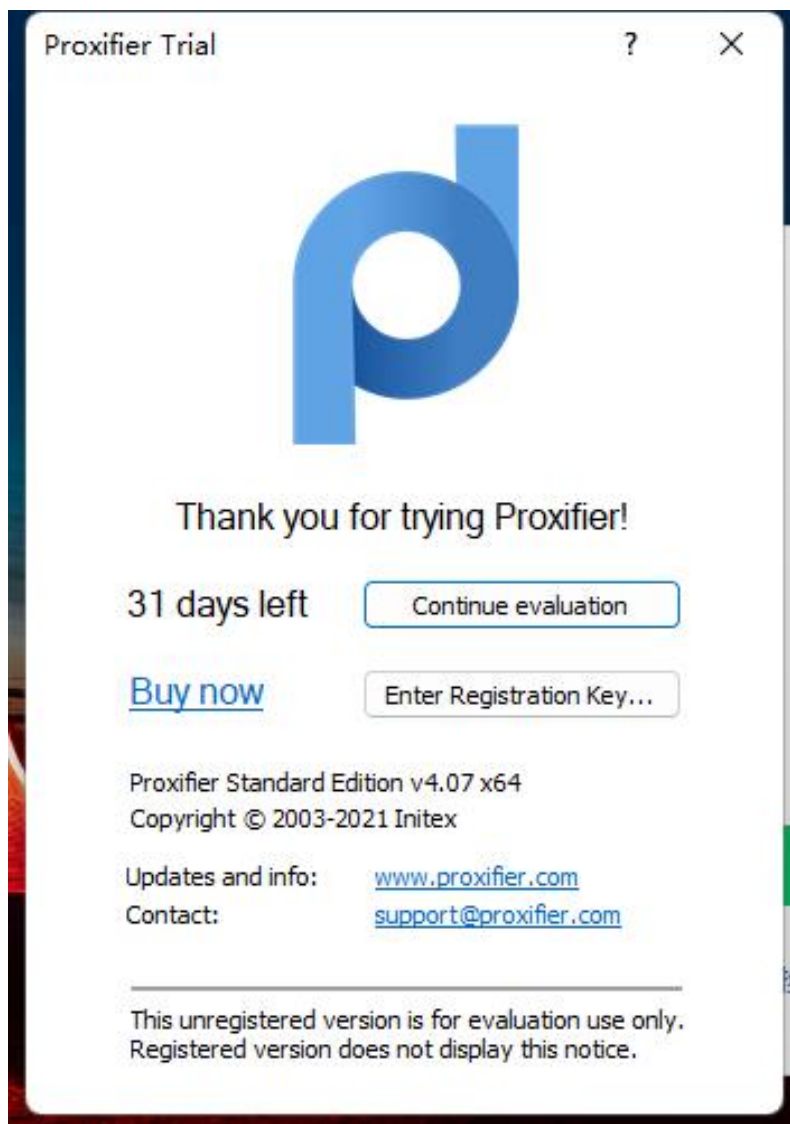
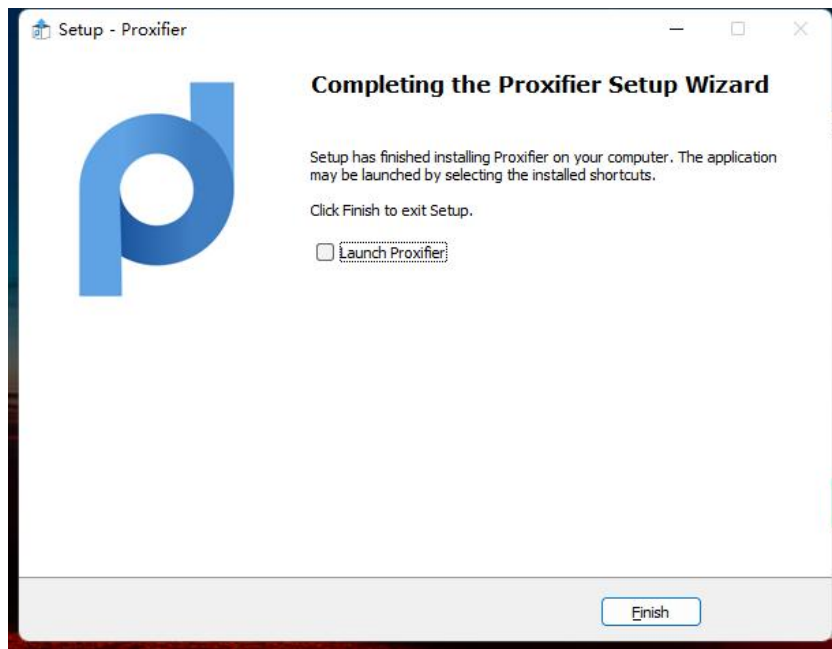




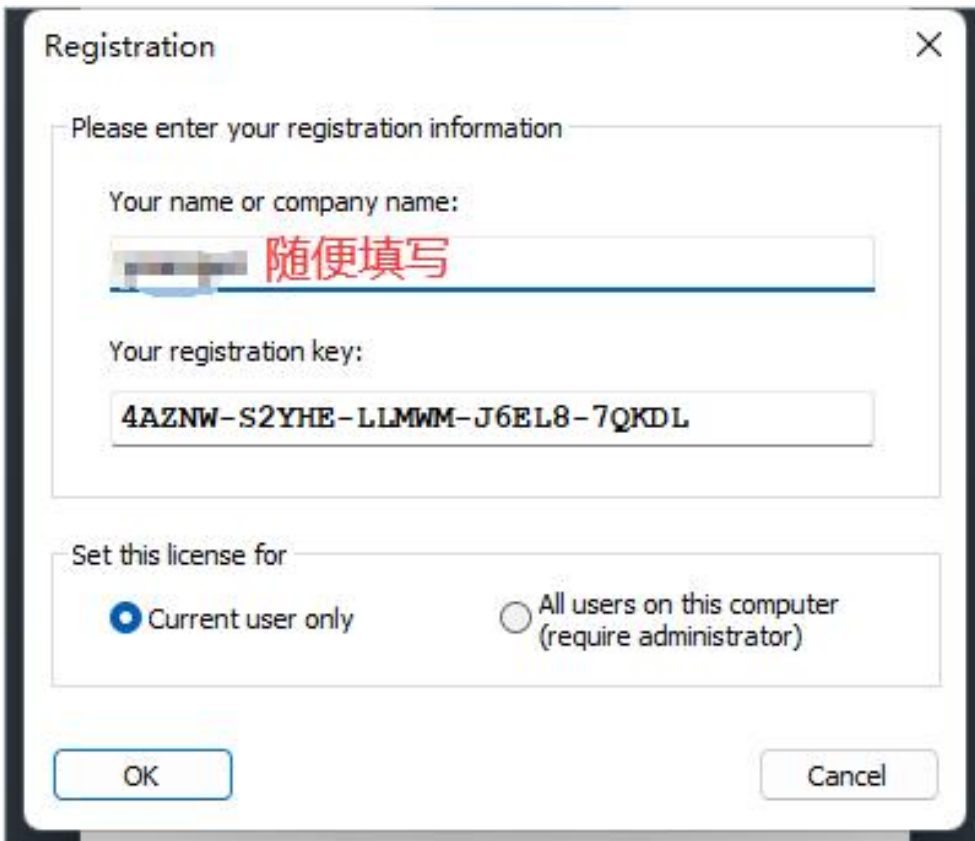
下图根据你的使用习惯进行选择，用我二把刀的翻译功力给你解释下：

- 导入老版本的配置
- 随系统一起启动
- 启动应用时检查更新
- 创建桌面快捷方式



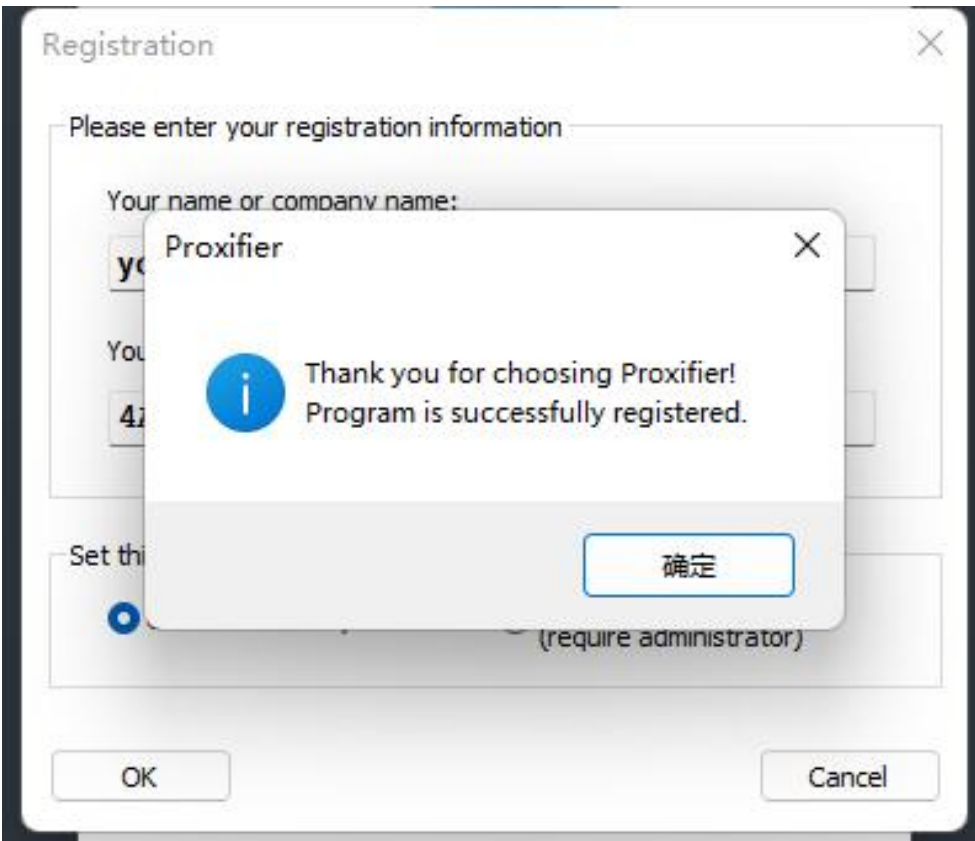


选择注册 key,名称随便填写, 秘钥 4AZNW-S2YHE-LLMWM-J6EL8-7QKDL



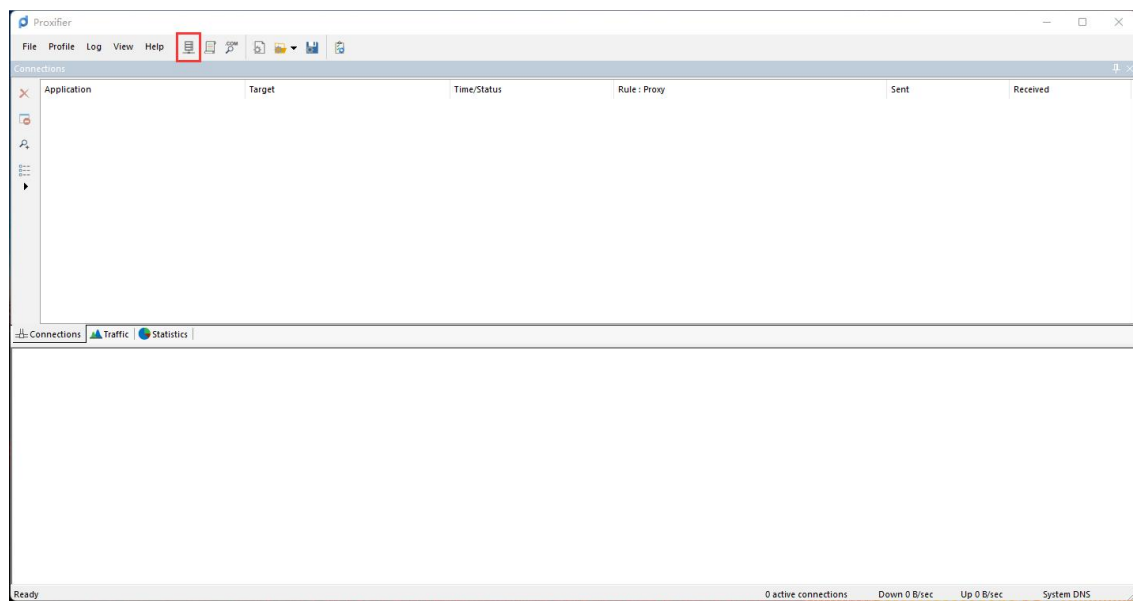
The image shows a 'Registration' dialog box with a close button (X) in the top right corner. It contains two main sections. The first section, titled 'Please enter your registration information', has two input fields. The first field is labeled 'Your name or company name:' and contains the text '随便填写' (随便填写) in red. The second field is labeled 'Your registration key:' and contains the key '4AZNW-S2YHE-LLMWM-J6EL8-7QKDL'. The second section, titled 'Set this license for', has two radio buttons. The first radio button is selected and labeled 'Current user only'. The second radio button is labeled 'All users on this computer (require administrator)'. At the bottom, there are two buttons: 'OK' and 'Cancel'.

点击 OK, 出现如下提示, 那么恭喜你啦

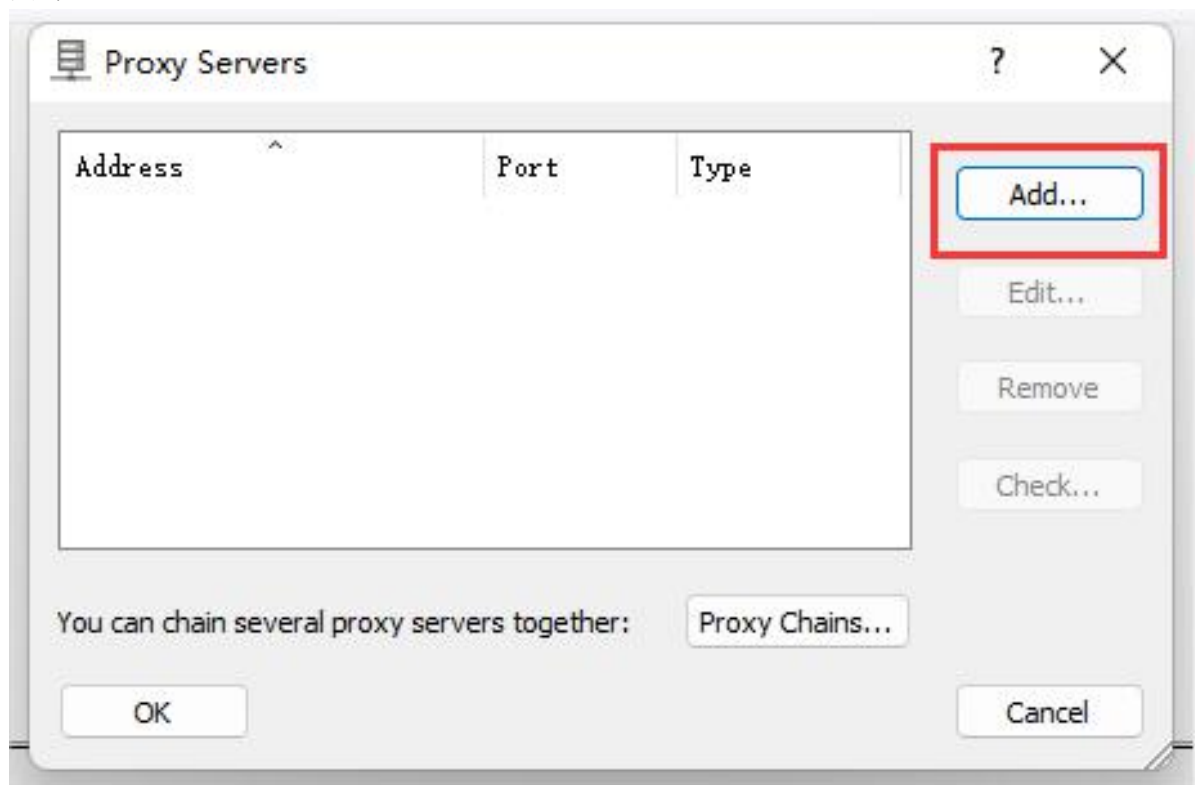


The image shows the same 'Registration' dialog box as before, but with a success message overlay. The overlay is a small dialog box titled 'Proxifier' with a close button (X) in the top right corner. It contains an information icon (i) and the text 'Thank you for choosing Proxifier! Program is successfully registered.' At the bottom of the overlay is a button labeled '确定' (确定). The background dialog box is still visible, showing the same input fields and radio buttons as before.

回到应用的主界面，点击如下图所示的按钮



点击 Add...



填入如下信息：

Address=49. 232. 50. 234

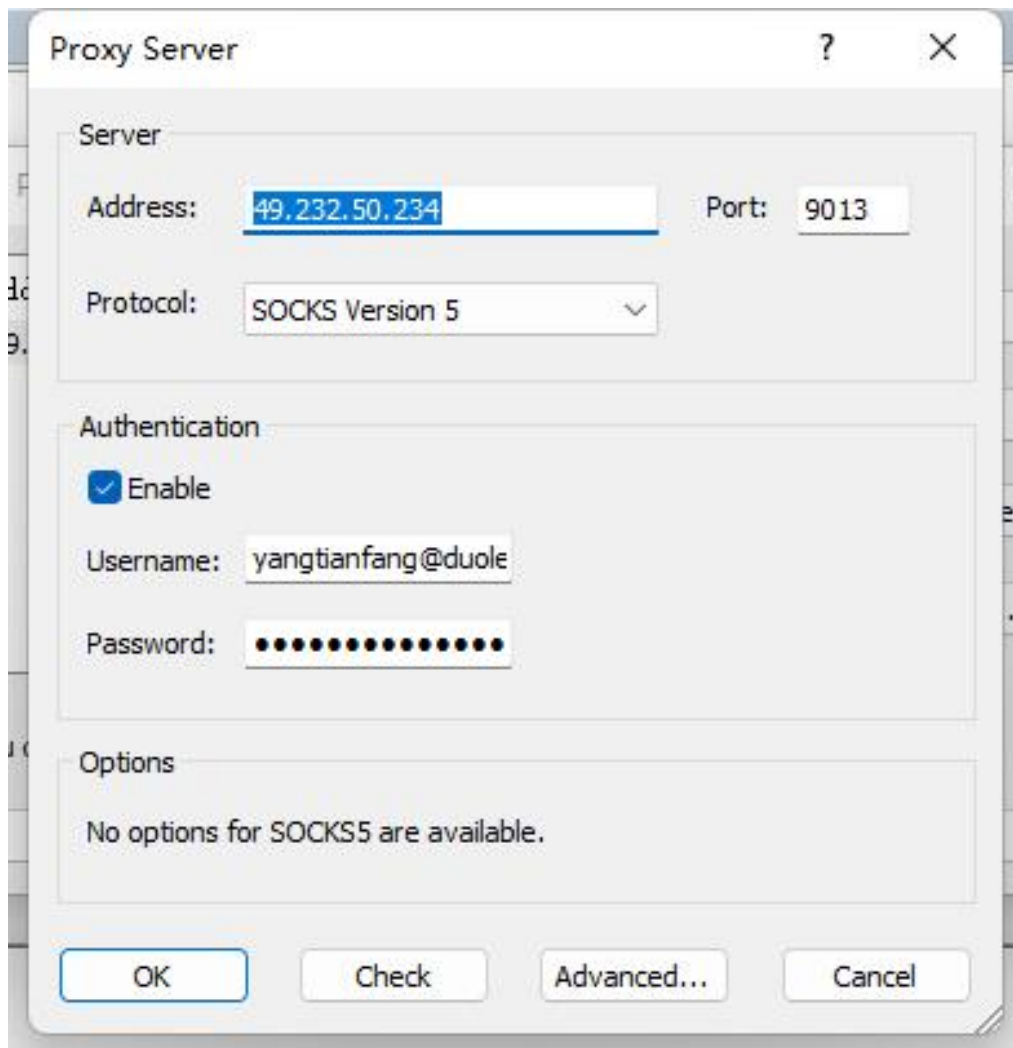
Port=9013

Protocol=SOCKS Version 5

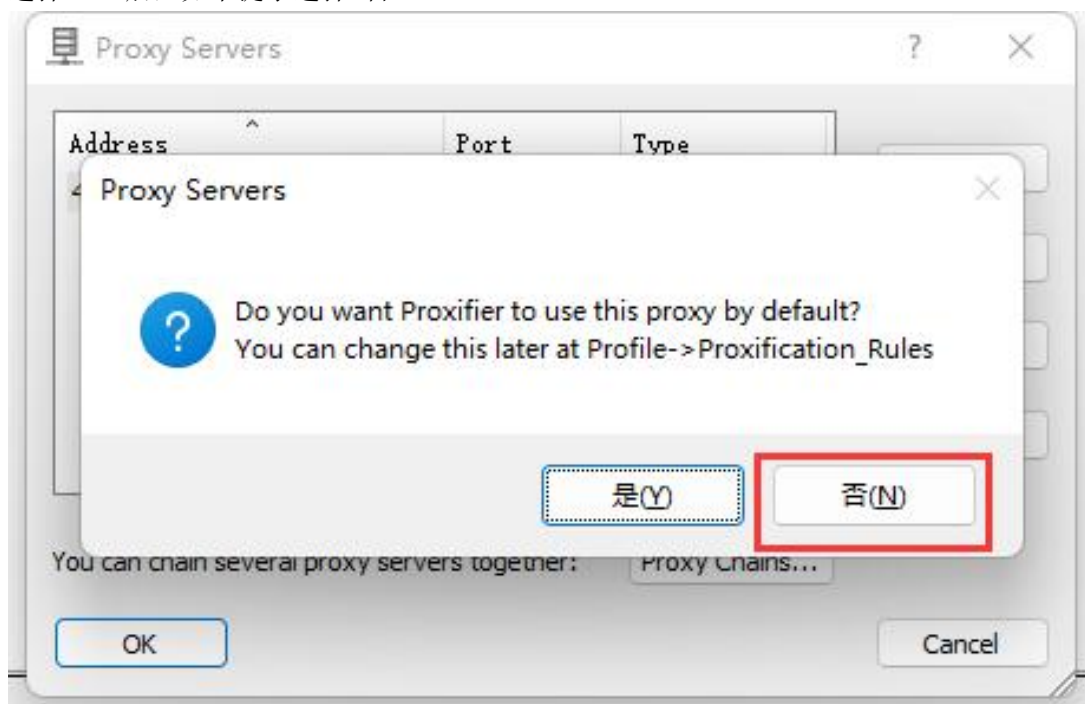
勾选 Enable

Username:联系管理员

Password:联系管理员

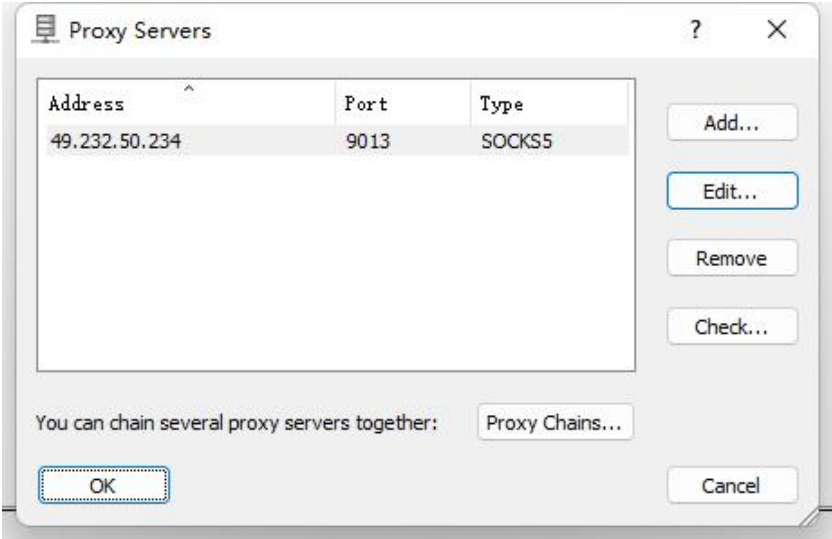


选择 OK 后，如下提示选择 否

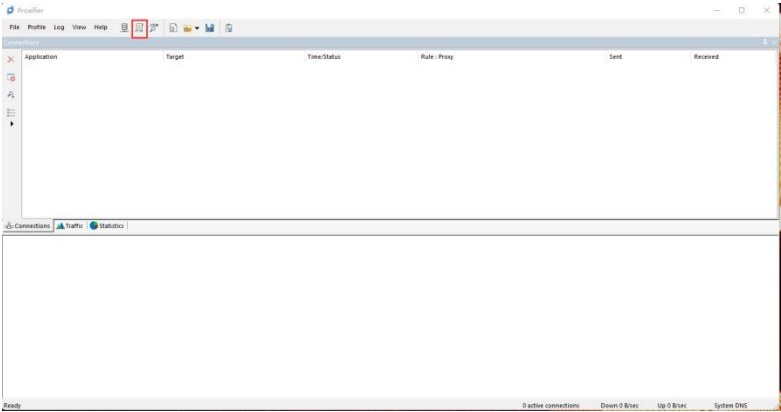




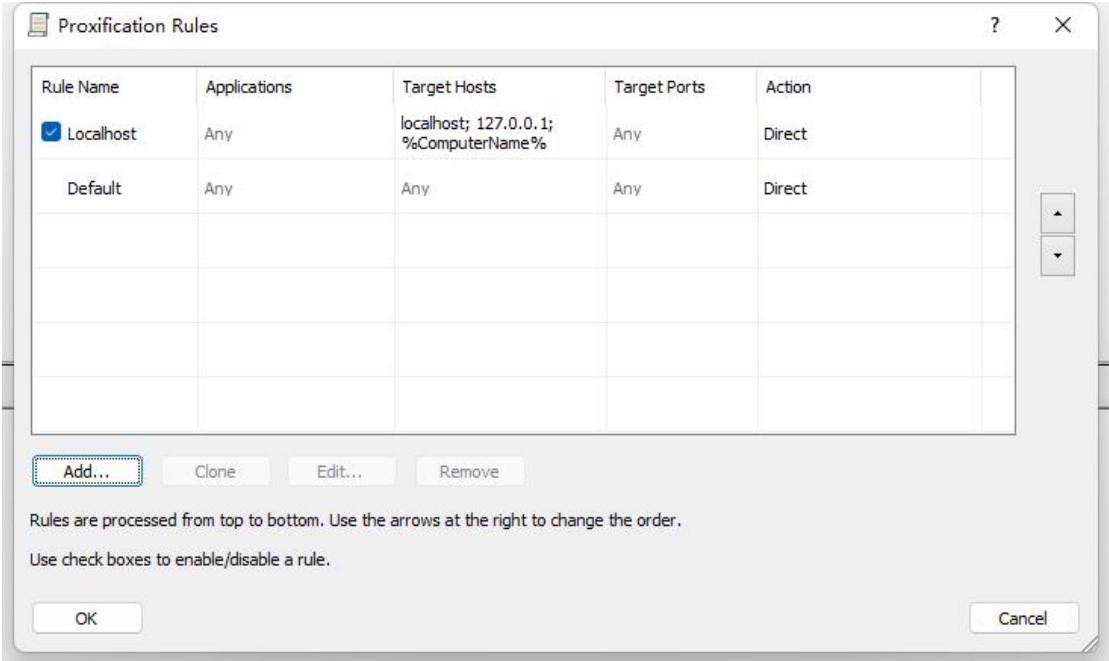
继续点击 OK



选择如下所示按钮



选择 Add...



如下图，按需填写，点击 OK



Proxification Rule

Name: New 随便填写 ☒ Enabled

Applications

Any

Example: iexplore.exe; "C:\some app.exe"; fire\*.exe; \*.bin Browse...

Target hosts

Any

Example: 127.0.0.1; \*.example.com; 192.168.1.\*; 10.1.0.0-10.5.255.255

Target ports

22

Example: 80; 8000-9000; 3128

Action: Proxy SOCKS5 49.232.50.234 Advanced...

OK Cancel

如下图，继续选择 OK

Proxification Rules

Rule Name	Applications	Target Hosts	Target Ports	Action
<input checked="" type="checkbox"/> Localhost	Any	localhost; 127.0.0.1; %ComputerName%	Any	Direct
<input checked="" type="checkbox"/> New	Any	Any	22	Proxy SOCKS5 49.232.50.234
Default	Any	Any	Any	Direct

Add... Clone Edit... Remove

Rules are processed from top to bottom. Use the arrows at the right to change the order.

Use check boxes to enable/disable a rule.

OK Cancel

打开你可能用到的应用，验证是否可以连接：

SecureCRT

Xshell

Beyond Compare

vscode

tabby

studio 3t

electerm

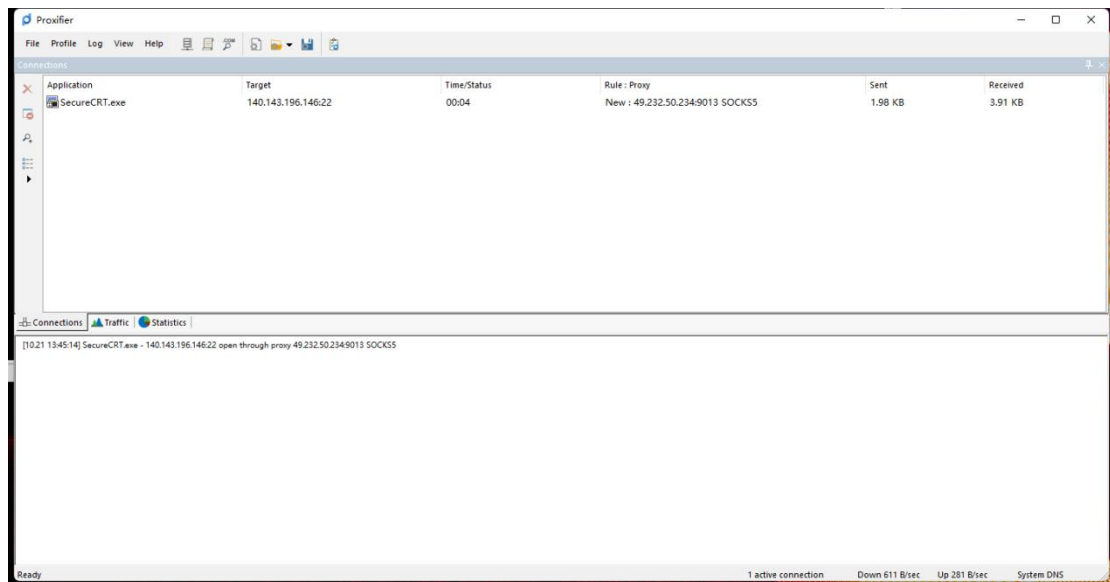
MongoDB Compass

Robo 3T

Sequel Pro

redis

transmit



如上，如果客户端连接服务器正常，那么恭喜你；如果无法连接，也不要烦躁灰心，下楼抽支烟放松下大脑，回来再来《亿》遍^\_^